

Bulletin No 60 The area around Jim's container

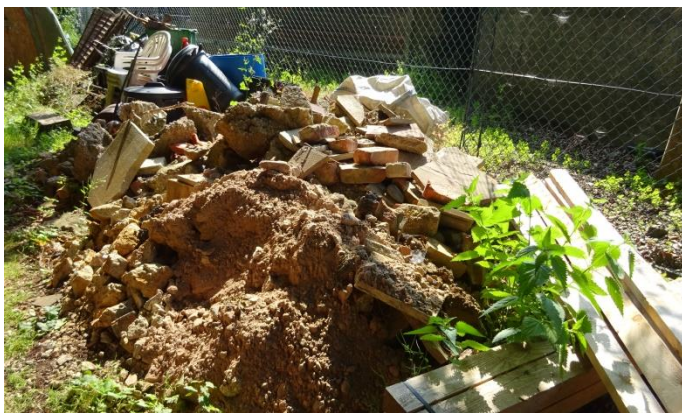
The Nature Trail steps

The basic layout of the new steps involves a straight flight down the slope from near the polytunnel to a landing, where there will be a right turn and a further flight of steps down to the existing path. Peter has now set this out, so that work on the landing can start. This is going to be made from old railway sleepers, back filled with crushed stone. More fill will be needed under parts of the flights, and to fill the steps themselves.



Recycling the rubble

A large heap of all kinds of rubble and other waste has accumulated behind Jim's container over the last few years. We want to clear this area completely and keep it tidy, so the access to the new steps and the nature trail is as pleasant as possible. As Peter needed hardcore for the steps, he made enquiries about crushing the rubble so he could make use of it, rather than take it away in a skip. A mini crusher has been ordered and will be operating in the sewage treatment works car park on Tuesday 24th August. If you would like to help load it (by hand) for a while, please let us know.



Some of the blocks of concrete were much too large for the crusher, so Peter has been sorting through the pile and breaking up all the oversize pieces. He then transported all the material for the crusher to the corner of the car park, in order to minimise the work required when the crusher is here.



If you have any bricks, blocks, stone etc you want to dispose of, please add them to the pile in the car park for crushing, before the 24th. Pieces larger than 50 x 25 cm will not get into the machine, so please do not bring anything over this size.

Jim's trailer

Since last Autumn, Jim's trailer has gradually been filled with people's waste wood and other unwanted items – including a satellite dish! This has made it impossible for Jim and Peter to use the trailer for any of the village grounds maintenance. Jim and Peter have recently emptied the trailer and burnt all the wood, and they now want it to be kept empty, so it is available for use. Please do not dispose of anything in or near the trailer (or anywhere else in the village), so it can be kept tidy. A notice will be put on the trailer, and a cover will be fitted. Jim and Peter (or any of us) are not supposed to deal with residents' waste.



Waste wood

Jim and Peter will be making a bonfire on the paddock towards the end of October. As usual, residents will be able to add any waste wood they want to burn. Please keep any material at your property until then.

Green waste

The arrangement to separate compost material from branches on the heap near Jim's container has worked reasonably well, so the principle will continue. However the compost area is getting rather full. When the new steps come into use, and the present route is dismantled and landscaped, we are planning to close off the current compost area, and move it to the other side of the heap, in order to help stabilise the steep ground there. There will be further updates on this as the step project progresses.



Best wishes

Richard Pollard	Crambeck House
Andy Craig-Smith	No 53
Peter Roberts	No 8